

Surface Mount Gas Discharge Tube

NGTC Series

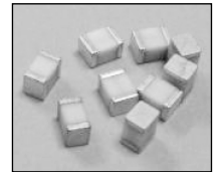
FEATURES

- FAST RESPONSE, HIGH CURRENT (2,000A @ 8/20 μ S)
- CASE SIZE 1812 (4.5MM X 3.2MM X 2.7MM)
- LOW CAPACITANCE AND INSERTION LOSS
- UL LISTED - ISOLATED LOOP CIRCUIT PROTECTORS-COMPONENTS
- COMPATIBLE WITH REFLOW SOLDERING (+260°C)
- RoHS COMPLIANT

**RoHS
Compliant**

includes all homogeneous materials*

*See Part Number System for Details



SPECIFICATIONS

Type	Breakdown Voltage ^{1,2} (100V/S)	Breakdown Voltage Tolerance (V)	Impulse Spark-over Voltage ^{1,2} (1KV/ μ S)	Impulse Discharge Current ³ (8/20 μ S)	Insulation Resistance	Cap. (1MHz, 0.5VDC)	Arc Voltage 1A	Application	Circuit
NGTC1812N201TR1F	200V	140 ~ 260	$\leq 750V$	2,000A	$\geq 1G\Omega @ 100V$	<1pF	~8V	RS485 RS232 RS422	1 2
NGTC1812N301TR1F	300V	210 ~ 390	$\leq 750V$				~15V	DC12V AC24V	1 2
NGTC1812N401TR1F	400V	360 ~ 560	$\leq 950V$				~15V	xDSL	1 2
NGTC1812N601TR1F	600V	420 ~ 780	$\leq 1200V$				~15V	Ethernet	1 2

Contact NIC regarding availability of values not shown.

1. Parameters are based on ITU-T K.12
2. The V-T waveform of the DC Breakdown Voltage and Impulse Spark-over Voltage must lie between the shades areas (see graph below)
3. Total Impulse Discharge Current 2,000A @ 8/20 μ s by IEC 61000-4-5, 10 shots.

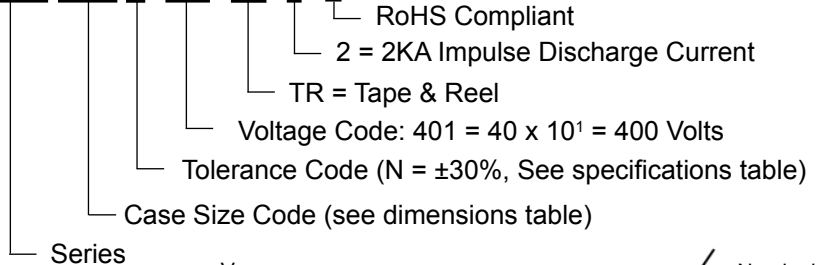
UL Listing:

NIC COMPONENTS CORP
Isolated Loop Circuit Protectors - Component
RE: QVGGQ2.E467518



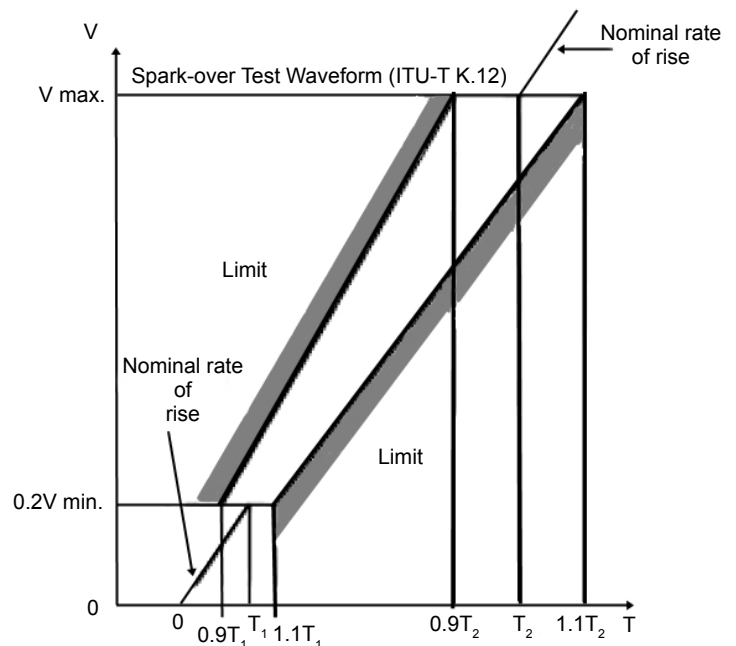
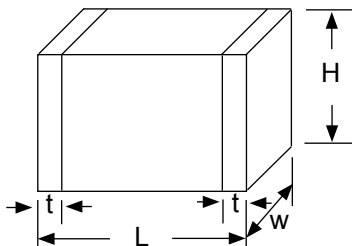
PART NUMBERING SYSTEM

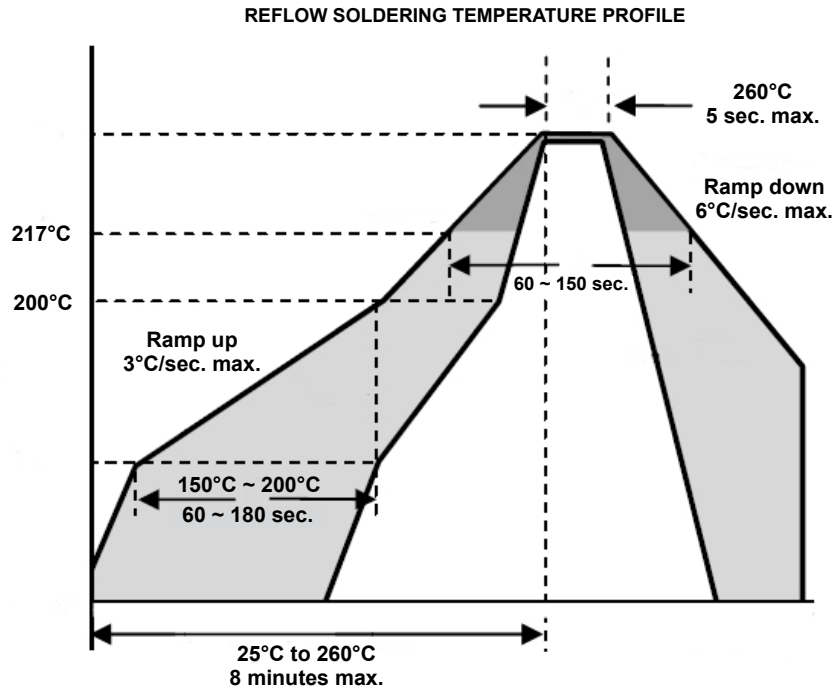
NGTC 1812 N 401 TR 2 E



DIMENSIONS (mm)

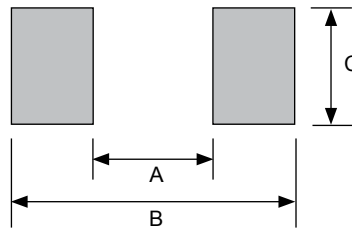
L	W	H	t
4.5 \pm 0.3	3.2 \pm 0.2	2.7 \pm 0.2	0.5 \pm 0.2





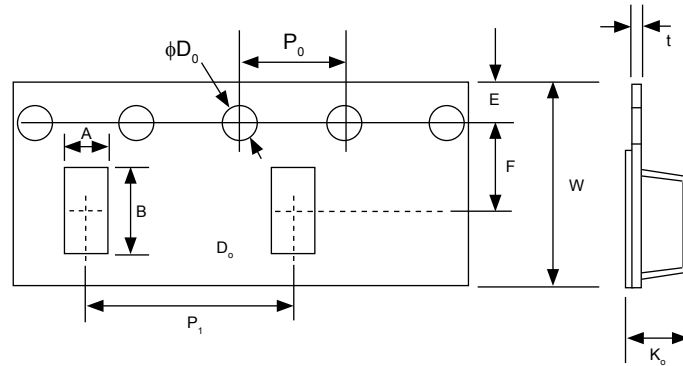
LAND PATTERN DIMENSIONS (mm)

Case Size	A	B	C
1812	3.5	5.5	3.5



EMBOSED PLASTIC CARRIER DIMENSIONS (mm)

Case Size	A	B	ϕD_0	E	F	P_0	P_1	t	K_0	W
1812	3.70 ±0.20	4.70 ±0.20	1.50 ±0.10	1.75 ±0.10	5.50 ±0.10	4.00 ±0.10	8.00 ±0.10	0.4 ±0.20	3.10 ±0.20	12.0 ±0.20



REEL DIMENSIONS (mm) AND QUANTITY

Case Size	D	D1	D2	W1	Qty
1812	$\phi 330$	$\phi 50$	13.0 ± 0.15	16.8 ± 2.0	2,000

